

The award-winning Lodgewood by L'hotel Mongkok Hong Kong is a boutique hotel cum serviced apartments with 87 smartly-designed guestrooms and a pot cuisine specialty restaurant. Only 8 minutes' walk away from the Mongkok MTR Station in the unique Mongkok neighborhood full of lively entertainment, markets, shops and restaurants, this boutique hotel is well received by international travelers who enjoy discovering the vibrancy of the local culture, staying at a fun-filled, compact and intimate urban oasis which offers professional and friendly hospitality services and connectivity for a chic, modern and green lifestyle.

香港旺角薈賢居(如心酒店集團管理)屢獲殊榮,是一間精品酒店暨服務式住宅,提供87間客房及1間以鍋物美食為主題的餐廳。酒店位於旺角這片滿佈娛樂場所、市集店舖和各式食肆的區域,交通四通八達,步行往旺角港鐵站只需約8分鐘,深受國際旅客歡迎,住店賓客在發掘多姿多彩的本土文化之餘,亦可同時欣賞到酒店簡潔精巧設計,感受置身城市綠洲的箇中樂趣,再配以先進設施和專業友善的款客服務,讓旅客與世界時刻連繫,走向環保綠化的時尚生活態度。



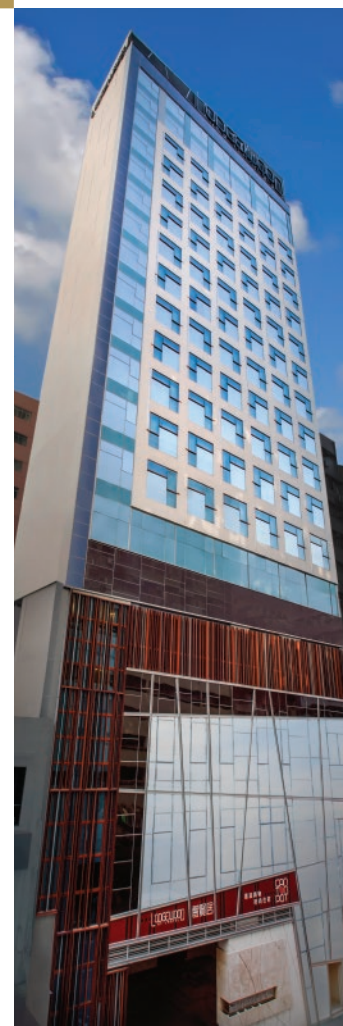
ACCOMMODATION 住宿

Lodgewood by L'hotel Mongkok Hong Kong has 87 smartly designed guestrooms of style and simplicity, including 4 spacious suites. With a room size ranging from 23 to 54 sq.m., this modern boutique hotel combines a sleek and chic décor with compact furnishing to accentuate space and comfort for guests.

香港旺角薈賢居擁有87間客房,其中包括4間寬敞的套房,面積由23平方米至54平方米不等;客房設計簡約型格,極富功能性,配以潮流設計和傢具,提升空間感和舒適度。

IN-ROOM FACILITIES & AMENITIES 客房設備

- Complimentary fixed line internet and Wi-Fi access, computer/fax data line
- Well-equipped bathroom with oval shaped shower cubicle and rain shower facilities, hair-dryer, makeup mirror, white tea scented bathroom amenities. Bathtub and Appelles bathroom toiletries available in all suites while k Suite has a Jacuzzi
- HD LED TV with satellite and cable TV channels, blue-ray DVD player, iDocking station with charging facilities, International Direct Dial (IDD) telephone with voice mail facilities, electric kettle, mini fridge, complimentary coffee and tea making facilities, personal electronic safe, iron and ironing board in all guestrooms
- Sofa bed and Nespresso coffee machine available in all suites while k Suite also has a spacious dining area, a double-door fridge, an additional guest toilet
- "Pillow Pick" menu
- 固網及無線Wi-Fi上網、電腦/傳真數據線
- 浴室設備完善,所有客房均設橢圓形花灑淋浴間、雨林式淋浴設施、電風筒、化妝鏡、白茶香味浴室用品。所有套房均配備特大浴缸和Appelles品牌浴室用品;k套房更設Jacuzzi按摩浴池
- 高清LED電視機備衛星及有線電視頻道、藍光DVD影碟播放機、iDocking揚聲充電器、長途電話直撥服務(IDD)及留言信箱服務、電水壺、迷你冰箱、免費泡茶及咖啡設施、電子保險箱、熨斗及熨衣板
- 所有套房均配備沙發牀和Nespresso咖啡機;k套房更設寬敞用餐區、節能雙門雪櫃和客廳
- 「自選睡枕」餐單





FOOD & BEVERAGE 餐飲設施

canton pot (2/F) *canton pot (2樓)*

Taking hotel dining and local flavors to a new height, *canton pot* specializes in contemporary pot cuisine. Through a reinvention and fresh produce, *canton pot* has created one of the best authentic hotpot menus in Hong Kong and is famous for its premium soup bases and homemade dumplings. This 74-seat specialty restaurant has a main dining hall and 7 private rooms.

以新鮮食材作全新演繹，*canton pot* 提升了尋常酒店餐飲和地道火鍋的層次，呈獻香港最佳鍋物食肆之一，其中用料上乘的高級湯底和手工餃子更大獲好評。*canton pot* 設74個座位，分佈在主要用餐區和七間私人廂房之內。



OTHER SERVICES & FACILITIES 其他服務及設施

- Complimentary Wi-Fi access within the Hotel
- 24-hour complimentary coffee at Welcoming Lobby Lounge
- Guest eKiosk and mobile app
- Hotel-airport limousine transfer service, car hire service
- Laundry and dry cleaning service
- 24-hour reception, foreign currency exchange
- Photo-copying, fax, printing, secretarial and courier service
- 24-hour medical assistance on request
- Baby-sitting service on request
- Non-smoking floors and disabled rooms
- Electric car charger
- 酒店全面覆蓋Wi-Fi無線上網，費用全免
- 於迎賓大堂24小時免費享用咖啡
- 電子資訊台及智能電話應用程式
- 往返機場貴賓房車接送服務、租車服務
- 洗熨及乾洗服務
- 24小時接待服務、外幣兌換
- 影印、傳真、打印、秘書服務及速遞服務
- 24小時醫護協助(應個別賓客要求)
- 保姆服務(應個別賓客要求)
- 非吸煙客房樓層及傷健設施客房
- 電動車充電站

LOCATION & TRANSPORTATION 位置及交通

FROM 從 / TO 往	APPROX. JOURNEY TIME(MINS) 約需時(分鐘)	
Hong Kong International Airport 香港國際機場	45	by car 行車
Hung Hom MTR Station 紅磡港鐵站	15	by car 行車
Lo Wu MTR Station / Lok Ma Chau Train Station 羅湖港鐵站/落馬洲火車站	50	by MTR 港鐵
Nearest MTR Station - Mong Kok Station (Exit A1) 鄰近港鐵站 - 旺角站 (A1出口)	8	on foot 步行

Lodgewood by L'hotel Mongkok Hong Kong
香港旺角普賢居 (如心酒店集團管理)

1131 Canton Road, Mongkok, Hong Kong
Tel: (852) 3968 7777
Fax: (852) 3968 7788
Email: info.lmkk@lhotelgroup.com

Reservations Hotline
Tel: (852) 3968 7878
Fax: (852) 2389 5516
Email: rsvns.lmkk@lhotelgroup.com

香港旺角普賢居 (如心酒店集團管理)
香港旺角廣東道1131號
電話: (852) 3968 7777
傳真: (852) 3968 7788
電郵: info.lmkk@lhotelgroup.com

客房預訂專線
電話: (852) 3968 7878
傳真: (852) 2389 5516
電郵: rsvns.lmkk@lhotelgroup.com

Map details:
 - To Mongkok East MTR Station (approx. 15 mins on foot via a covered footbridge)
 - To Mongkok MTR Station (approx. 8 mins)
 - Bus Stop - From Airport (A21)
 - Bus Stop - To Airport (A21)
 - Cross-border Coach Station
 - Shopping & Dining, Cinema, Place of Interest, Supermarket, Convenience Store, Bank / ATM, Escalator, Lift, Parking

1. Dynasty Theatre 皇朝劇院
2. Langham Place 龍堡中心
3. One Grand Tower 雅樂中心
4. Mongkok Computer Centre 旺角電腦中心
5. China Travel Service (HK) Limited 中國旅行社香港旺角分社
6. Moko 新世紀廣場
7. Shopping & Dining Area 購物及餐飲熱點

*Pedestrian zones during public holidays 假日行人專用區

A Member of Chinachem Group
華懋集團成員

www.lhotelgroup.com